

Rv101

Steckverbinder
Metall vernickelt



ROSSMANEK

DER GRÜNE
PNEUMATIK-KATALOG



ZTR Rossmanek GmbH

Am Pickhammer 9

D-58802 Balve

info@ztr.de

www.ztr.de

Fon: +49 (0) 2375/9299-0

Fax: +49 (0) 2375/9299-21

2.0

Steckverbinder, Metall vernickelt

Steckverbinder, Metall vernickelt

101.01:Seite 5



101.91:Seite 5



101.90:Seite 5



101.97:Seite 6



101.93:Seite 6



101.98:Seite 6



101.81:Seite 6



101.05:Seite 7



101.05:Seite 7



101.79:Seite 7



101.79:Seite 8



101.03:Seite 8



101.03:Seite 8



101.08:Seite 9



101.08:Seite 9



101.41:Seite 9



101.01:Seite 9/10



101.91:Seite 10



101.93:Seite 10



101.98:Seite 11



101.42:Seite 11



101.45:Seite 11



101.14:Seite 11



101.90:Seite 12



101.29:Seite 12



101.97:Seite 12



101.96:Seite 12



101.69:Seite 12



101.09:Seite 13



101.09:Seite 13



101.23:Seite 13



101.78:Seite 13



101.02:Seite 14



101.04:Seite 14



101.06:Seite 14



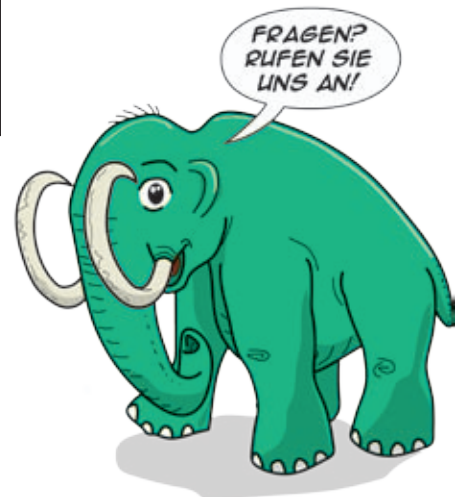
101.06:Seite 14



Steckverbinder, Metall vernickelt

Steckverbinder, Metall vernickelt

| | | | | | |
|---|---|---|---|---|---|
| 101.07:Seite 15 | 101.16:Seite 15 | 101.32:Seite 15 | 101.33:Seite 15 | 101.34:Seite 15 | 101.30:Seite 16 |
|  |  |  |  |  |  |
| 101.60:Seite 16 | 101.40:Seite 16 | 101.48:Seite 16 | 101.11:Seite 16 | 101.12:Seite 17 | 101.24:Seite 17 |
|  |  |  |  |  |  |
| 101.10:Seite 17 | 101.10.D:Seite 17 | 101.10:Seite 17 | 101.10:Seite 17 | 101.18:Seite 18 | 101.19:Seite 18 |
|  |  |  |  |  |  |
| 101.66:Seite 18 | 101.22:Seite 18 | 101.00:Seite 19 | 101.00:Seite 19 | 101.00:Seite 20 | 101.00:Seite 20 |
|  |  |  |  Stufenbohrer für 101.00. |  |  |
| 101.00:Seite 20 | 101.00:Seite 20 | 101.37:Seite 21 | 201.38/39:Seite 21 | | |
|  |  |  |  | | |



Steckverbinder, Metall vernickelt

Serie Rv101. Steckverbinder Messing, Metall vernickelt

Technische Daten:

Material:

Körper, Lösering, Gewinde, Spannzange: Messing, Metall vernickelt

O-Ring: NBR (ölbeständig, silikonfrei), andere z.B. FKM, Silikon etc. auf Anfrage

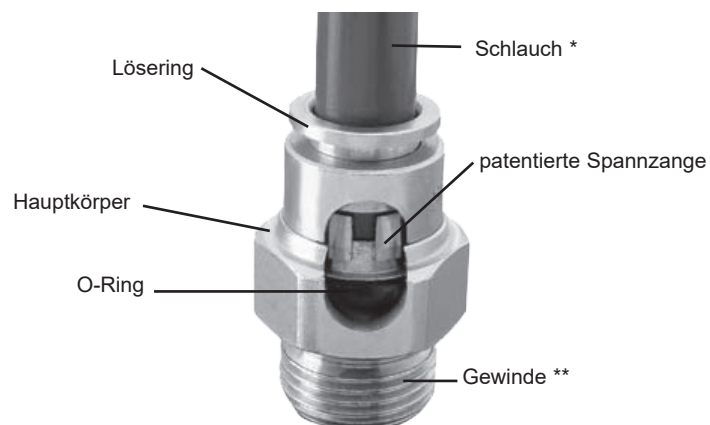
* Schlauch: z.B. PA, PE, PU, PTFE, PP, Silikon, PVC (+/- 0.05 bei $\varnothing 4$ - $\varnothing 10$; +/-0.1 bei $\varnothing 12$ - $\varnothing 14$)

** Gewinde:

- zylindrisches Gewinde mit gekammertem O-Ring UNI-ISO 228/1
- metrisches Gewinde mit gekammertem O-Ring UNI 5542-65
- konisches Gewinde mit Teflonbeschichtung UNI-ISO7/1
- konisches Gewinde NPT ANSI/ASME B1.20.1
- zylindrisches Innengewinde UNI-ISO 228/1
- andere Spezialgewinde auf Anfrage

Betriebsdruck: 16 bar, Vakuum

Betriebstemperatur: -10°C bis +80°C, 263°K bis 353°K



Steckverbinder, Metall vernickelt

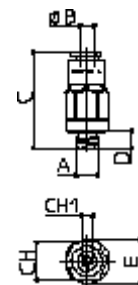
Serie 101.01.

Gerader Einschraubanschluss
metrisches Gewinde UNI-5542-65



| Artikel-Nr. | A | B | C | D | E | F | G | CH | CH1 |
|--------------|----------|---|------|---|------|---|---|----|-----|
| 101.01.04.08 | M5 | 4 | 22,0 | 4 | 10,0 | | | 9 | 2,5 |
| 101.01.04.31 | M6x0,75 | 4 | 23,0 | 5 | 10,0 | | | 9 | 2,5 |
| 101.01.04.32 | M6x1 | 4 | 23,0 | 5 | 10,0 | | | 9 | 2,5 |
| 101.01.04.37 | M8x1 | 4 | 22,0 | 6 | 10,4 | | | 9 | - |
| 101.01.05.08 | M5 | 5 | 22,0 | 4 | 11,0 | | | 10 | 2,5 |
| 101.01.06.08 | M5 | 6 | 26,0 | 4 | 13,0 | | | 12 | 2,5 |
| 101.01.06.32 | M6x1 | 6 | 26,0 | 5 | 13,0 | | | 12 | 2,5 |
| 101.01.06.38 | M8x1,25 | 6 | 27,5 | 6 | 13,0 | | | 12 | 4 |
| 101.01.06.44 | M10x1 | 6 | 24,5 | 6 | 14,3 | | | 13 | 4 |
| 101.01.06.51 | M12x1 | 6 | 26,0 | 8 | 17,5 | | | 16 | 4 |
| 101.01.06.52 | M12x1,25 | 6 | 26,0 | 8 | 17,5 | | | 16 | 4 |
| 101.01.06.53 | M12x1,5 | 6 | 26,0 | 8 | 17,5 | | | 16 | 4 |
| 101.01.08.38 | M8x1,25 | 8 | 29,5 | 6 | 15,5 | | | 14 | - |
| 101.01.08.44 | M10x1 | 8 | 29,5 | 6 | 15,5 | | | 14 | 5 |
| 101.01.08.51 | M12x1 | 8 | 29,0 | 8 | 17,5 | | | 16 | 6 |
| 101.01.08.52 | M12x1,25 | 8 | 29,0 | 8 | 17,5 | | | 16 | 6 |
| 101.01.08.53 | M12x1,5 | 8 | 29,0 | 8 | 17,5 | | | 16 | 6 |

* ohne gekammerten O- Ring

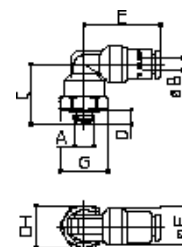


Serie 101.91.

Winkel-Einschraubanschluss
metrisches Gewinde UNI-5542-65



| Artikel-Nr. | A | B | C | D | E | F | G | CH | CH1 |
|--------------|----------|---|------|---|------|----|------|----|-----|
| 101.91.04.08 | M5 | 4 | 16,0 | 4 | 20,0 | 10 | 12,2 | 11 | |
| 101.91.05.08 | M5 | 5 | 19,0 | 4 | 20,5 | 11 | 12,2 | 11 | |
| 101.91.06.08 | M5 | 6 | 18,0 | 4 | 23,0 | 13 | 13,0 | 12 | |
| 101.91.06.44 | M10x1 | 6 | 20,5 | 6 | 23,0 | 13 | 14,3 | 13 | |
| 101.91.06.51 | M12x1 | 6 | 22,0 | 8 | 23,0 | 13 | 17,5 | 16 | |
| 101.91.06.52 | M12x1,25 | 6 | 22,0 | 8 | 23,0 | 13 | 17,5 | 16 | |
| 101.91.06.53 | M12x1,5 | 6 | 22,0 | 8 | 23,0 | 13 | 17,5 | 16 | |
| 101.91.08.44 | M10x1 | 8 | 21,5 | 6 | 25,0 | 15 | 15,5 | 14 | |
| 101.91.08.51 | M12x1 | 8 | 23,0 | 8 | 25,0 | 15 | 17,5 | 16 | |
| 101.91.08.52 | M12x1,25 | 8 | 23,0 | 8 | 25,0 | 15 | 17,5 | 16 | |
| 101.91.08.53 | M12x1,5 | 8 | 23,0 | 8 | 25,0 | 15 | 17,5 | 16 | |

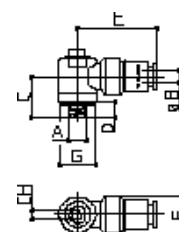


Serie 101.90.

Winkel-Einschraubanschluss mit Innensechskant
metrisches Gewinde UNI-5542-65



| Artikel-Nr. | A | B | C | D | E | F | G | CH | CH1 |
|--------------|----------|---|------|---|----|------|----|-----|-----|
| 101.90.04.08 | M5 | 4 | 11,5 | 4 | 21 | 9,8 | 9 | 2,5 | |
| 101.90.04.31 | M6x 0,75 | 4 | 12,5 | 5 | 21 | 9,8 | 9 | 2,5 | |
| 101.90.04.32 | M6x1 | 4 | 12,5 | 5 | 21 | 9,8 | 9 | 2,5 | |
| 101.90.04.37 | M8x1 | 4 | 13,0 | 6 | 21 | 9,8 | 12 | 2,5 | |
| 101.90.05.08 | M5 | 5 | 11,5 | 4 | 21 | 9,8 | 9 | 2,5 | |
| 101.90.05.31 | M6x0,75 | 5 | 12,5 | 5 | 21 | 9,8 | 9 | 2,5 | |
| 101.90.05.32 | M6x1 | 5 | 12,5 | 5 | 21 | 9,8 | 9 | 2,5 | |
| 101.90.05.37 | M8x1 | 5 | 13,0 | 6 | 21 | 9,8 | 12 | 2,5 | |
| 101.90.06.08 | M5 | 6 | 12,5 | 4 | 24 | 13,0 | 11 | 4 | |
| 101.90.06.32 | M6x1 | 6 | 13,5 | 5 | 24 | 13,0 | 11 | 4 | |



Steckverbinder, Metall vernickelt

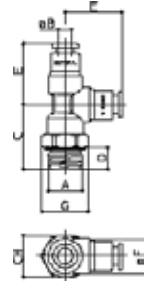
Serie

101.93.

L-Einschraubanschluss
metrisches Gewinde UNI-5542-65



| Artikel-Nr. | A | B | C | D | E | F | G | CH | CH1 |
|--------------|----|---|----|---|------|----|------|----|-----|
| 101.93.04.08 | M5 | 4 | 18 | 4 | 20,0 | 10 | 12,2 | 11 | |
| 101.93.05.08 | M5 | 5 | 19 | 4 | 20,5 | 11 | 12,2 | 11 | |



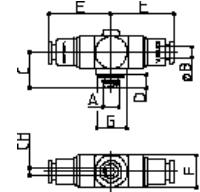
Serie

101.97.

T-Einschraubanschluss mit Innensechskant
metrisches Gewinde UNI-5542-65



| Artikel-Nr. | A | B | C | D | E | F | G | CH | CH1 |
|--------------|---------|---|----|---|------|----|----|-----|-----|
| 101.97.04.08 | M5 | 4 | 11 | 4 | 19,5 | 10 | 9 | 2,5 | |
| 101.97.04.31 | M6x0,75 | 4 | 12 | 5 | 19,5 | 10 | 9 | 2,5 | |
| 101.97.04.32 | M6x1 | 4 | 12 | 5 | 19,5 | 10 | 9 | 2,5 | |
| 101.97.04.37 | M8x1 | 4 | 13 | 6 | 21,0 | 10 | 12 | 2,5 | |
| 101.97.06.08 | M5x1 | 6 | | | | | | | |
| 101.97.06.32 | M6x1 | 6 | | | | | | | |



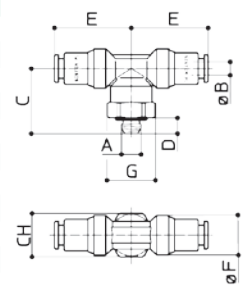
Serie

101.98.

T-Einschraubanschluss
metrisches Gewinde UNI-5542-65



| Artikel-Nr. | A | B | C | D | E | F | G | CH | CH1 |
|--------------|----------|---|------|---|------|----|------|----|-----|
| 101.98.04.08 | M5 | 4 | 16,0 | 4 | 20,0 | 10 | 12,2 | 11 | |
| 101.98.05.08 | M5 | 5 | 19,0 | 4 | 20,5 | 11 | 12,2 | 11 | |
| 101.98.06.08 | M5 | 6 | 18,0 | 4 | 23,0 | 13 | 13,0 | 12 | |
| 101.98.06.44 | M10x1 | 6 | 20,5 | 6 | 23,0 | 13 | 14,3 | 13 | |
| 101.98.06.51 | M12x1 | 6 | 22,0 | 8 | 23,0 | 13 | 17,5 | 16 | |
| 101.98.06.52 | M12x1,25 | 6 | 22,0 | 8 | 23,0 | 13 | 17,5 | 16 | |
| 101.98.06.53 | M12x1,5 | 6 | 22,0 | 8 | 23,0 | 13 | 17,5 | 16 | |
| 101.98.08.44 | M10x1 | 8 | 21,5 | 6 | 25,0 | 15 | 15,5 | 14 | |
| 101.98.08.51 | M12x1 | 8 | 23,0 | 8 | 25,0 | 15 | 17,5 | 16 | |
| 101.98.08.52 | M12x1,25 | 8 | 23,0 | 8 | 25,0 | 15 | 17,5 | 16 | |
| 101.98.08.53 | M12x1,5 | 8 | 23,0 | 8 | 25,0 | 15 | 17,5 | 16 | |



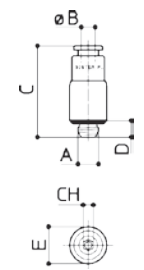
Serie

101.81.

Gerader Einschraubanschluss mit
Innensechskant, Rundausführung
metrisches Gewinde UNI-5542-65



| Artikel-Nr. | A | B | C | D | E | F | G | CH | CH1 |
|--------------|---------|---|----|---|----|---|---|-----|-----|
| 101.81.04.08 | M5 | 4 | 22 | 4 | 9 | | | 2,5 | |
| 101.81.04.31 | M6x0,75 | 4 | 23 | 5 | 9 | | | 2,5 | |
| 101.81.04.32 | M6x1 | 4 | 23 | 5 | 9 | | | 2,5 | |
| 101.81.05.08 | M5 | 5 | 23 | 4 | 10 | | | 2,5 | |



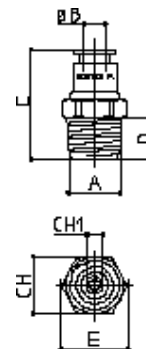
Steckverbinder, Metall vernickelt

Serie 101.05.

Gerader Einschraubanschluss
konisches Gewinde UNI-ISO 7/1



| Artikel-Nr. | A | B | C | D | E | F | CH | CH1 |
|--------------|-----|----|------|----|------|---|----|-----|
| 101.05.04.10 | 1/8 | 4 | 22,0 | 8 | 11,2 | | 10 | 3 |
| 101.05.04.13 | 1/4 | 4 | 25,0 | 10 | 15,5 | | 14 | 3 |
| 101.05.05.10 | 1/8 | 5 | 22,0 | 8 | 11,2 | | 10 | 4 |
| 101.05.05.13 | 1/4 | 5 | 25,0 | 10 | 15,5 | | 14 | 4 |
| 101.05.06.10 | 1/8 | 6 | 22,0 | 8 | 13,4 | | 12 | 4 |
| 101.05.06.13 | 1/4 | 6 | 27,0 | 10 | 15,5 | | 14 | 4 |
| 101.05.08.10 | 1/8 | 8 | 29,0 | 8 | 15,5 | | 14 | 6 |
| 101.05.08.13 | 1/4 | 8 | 28,0 | 10 | 15,5 | | 14 | 6 |
| 101.05.08.17 | 3/8 | 8 | 30,0 | 11 | 19,0 | | 17 | 6 |
| 101.05.10.13 | 1/4 | 10 | 34,0 | 10 | 19,0 | | 17 | 8 |
| 101.05.10.17 | 3/8 | 10 | 33,0 | 11 | 19,0 | | 17 | 8 |
| 101.05.10.21 | 1/2 | 10 | 36,0 | 14 | 24,5 | | 22 | 8 |
| 101.05.12.13 | 1/4 | 12 | 36,0 | 10 | 23,5 | | 21 | 8 |
| 101.05.12.17 | 3/8 | 12 | 37,0 | 11 | 23,5 | | 21 | 10 |
| 101.05.12.21 | 1/2 | 12 | 36,0 | 14 | 24,5 | | 22 | 10 |
| 101.05.14.17 | 3/8 | 14 | 41,0 | 11 | 28,0 | | 25 | 10 |
| 101.05.14.21 | 1/2 | 14 | 41,0 | 14 | 28,0 | | 25 | 12 |

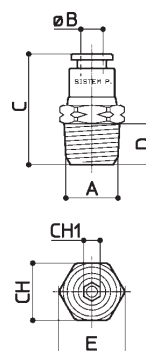


Serie 101.05.

Gerader Einschraubanschluss
konisches Gewinde NPT



| Artikel-Nr. | A | B | C | D | E | F | CH | CH1 |
|--------------|-----|----|------|----|------|---|----|-----|
| 101.05.04.09 | 1/8 | 4 | 22,0 | 8 | 11,2 | | 10 | 3 |
| 101.05.04.12 | 1/4 | 4 | 25,0 | 10 | 15,5 | | 14 | 3 |
| 101.05.06.09 | 1/8 | 6 | 22,0 | 8 | 13,4 | | 12 | 4 |
| 101.05.06.12 | 1/4 | 6 | 27,0 | 10 | 15,5 | | 14 | 4 |
| 101.05.08.09 | 1/8 | 8 | 29,0 | 8 | 15,5 | | 14 | 6 |
| 101.05.08.12 | 1/4 | 8 | 28,0 | 10 | 15,5 | | 14 | 6 |
| 101.05.10.12 | 1/4 | 10 | 34,0 | 10 | 19,0 | | 17 | 8 |
| 101.05.10.16 | 3/8 | 10 | 33,0 | 11 | 19,0 | | 17 | 8 |
| 101.05.12.12 | 1/4 | 12 | 36,0 | 10 | 23,5 | | 21 | 8 |
| 101.05.12.16 | 3/8 | 12 | 37,0 | 11 | 23,5 | | 21 | 10 |
| 101.05.12.20 | 1/2 | 12 | 36,0 | 14 | 24,5 | | 22 | 10 |

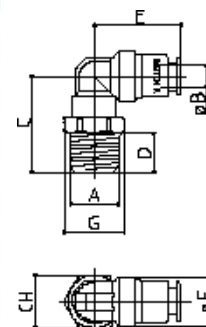


Serie 101.79.

Winkel-Einschraubanschluss
konisches Gewinde UNI-ISO 7/1



| Artikel-Nr. | A | B | C | D | E | F | G | CH |
|--------------|-----|----|------|----|------|------|------|----|
| 101.79.04.10 | 1/8 | 4 | 21,5 | 8 | 20,0 | 10,0 | 12,2 | 11 |
| 101.79.04.13 | 1/4 | 4 | 23,0 | 10 | 20,0 | 10,0 | 15,5 | 14 |
| 101.79.05.10 | 1/8 | 5 | 22,0 | 8 | 20,5 | 11,0 | 12,2 | 11 |
| 101.79.05.13 | 1/4 | 5 | 24,0 | 10 | 20,5 | 11,0 | 15,5 | 14 |
| 101.79.06.10 | 1/8 | 6 | 23,0 | 8 | 23,0 | 13,0 | 13,4 | 12 |
| 101.79.06.13 | 1/4 | 6 | 25,0 | 10 | 23,0 | 13,0 | 15,5 | 14 |
| 101.79.08.10 | 1/8 | 8 | 24,0 | 8 | 25,0 | 15,0 | 15,5 | 14 |
| 101.79.08.13 | 1/4 | 8 | 26,0 | 10 | 25,0 | 15,0 | 15,5 | 14 |
| 101.79.08.17 | 3/8 | 8 | 26,0 | 11 | 25,0 | 15,0 | 19,0 | 17 |
| 101.79.10.13 | 1/4 | 10 | 30,0 | 10 | 28,5 | 17,5 | 21,2 | 19 |
| 101.79.10.17 | 3/8 | 10 | 31,0 | 11 | 28,5 | 17,5 | 21,2 | 19 |
| 101.79.10.21 | 1/2 | 10 | 34,0 | 14 | 28,5 | 17,5 | 24,5 | 22 |
| 101.79.12.13 | 1/4 | 12 | 30,0 | 10 | 32,0 | 21,5 | 24,5 | 22 |
| 101.79.12.17 | 3/8 | 12 | 33,0 | 11 | 32,0 | 21,5 | 24,5 | 22 |
| 101.79.12.21 | 1/2 | 12 | 35,0 | 14 | 32,0 | 21,5 | 24,5 | 22 |
| 101.79.14.17 | 3/8 | 14 | 35,0 | 11 | 36,5 | 25,5 | 29,0 | 26 |
| 101.79.14.21 | 1/2 | 14 | 38,0 | 14 | 36,5 | 25,5 | 29,0 | 26 |



Steckverbinder, Metall vernickelt

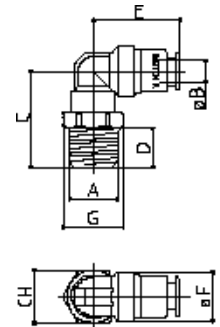
Serie

101.79.

Winkel-Einschraubanschluss
konisches Gewinde NPT



| Artikel-Nr. | A | B | C | D | E | F | G | CH |
|--------------|-----|----|------|----|------|------|------|----|
| 101.79.04.09 | 1/8 | 4 | 21,5 | 8 | 20,0 | 10,0 | 12,2 | 11 |
| 101.79.04.12 | 1/4 | 4 | 23,0 | 10 | 20,0 | 10,0 | 15,5 | 14 |
| 101.79.06.09 | 1/8 | 6 | 23,0 | 8 | 23,0 | 13,0 | 13,4 | 12 |
| 101.79.06.12 | 1/4 | 6 | 25,0 | 10 | 23,0 | 13,0 | 15,5 | 14 |
| 101.79.08.09 | 1/8 | 8 | 24,0 | 8 | 25,0 | 15,0 | 15,5 | 14 |
| 101.79.08.12 | 1/4 | 8 | 26,0 | 10 | 25,0 | 15,0 | 15,5 | 14 |
| 101.79.10.12 | 1/4 | 10 | 30,0 | 10 | 28,5 | 17,5 | 21,2 | 19 |
| 101.79.10.16 | 3/8 | 10 | 31,0 | 11 | 28,5 | 17,5 | 21,2 | 19 |
| 101.79.12.12 | 1/4 | 12 | 30,0 | 10 | 32,0 | 21,5 | 24,5 | 22 |
| 101.79.12.16 | 3/8 | 12 | 33,0 | 11 | 32,0 | 21,5 | 24,5 | 22 |
| 101.79.12.20 | 1/2 | 12 | 35,0 | 14 | 32,0 | 21,5 | 24,5 | 22 |



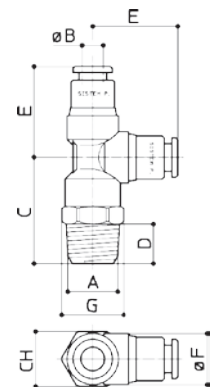
Serie

101.03.

L-Einschraubanschluss
konisches Gewinde UNI-ISO 7/1



| Artikel-Nr. | A | B | C | D | E | F | G | CH |
|--------------|-----|----|------|----|------|------|------|----|
| 101.03.04.10 | 1/8 | 4 | 23,0 | 8 | 20,0 | 10,0 | 12,2 | 11 |
| 101.03.04.13 | 1/4 | 4 | 25,0 | 10 | 20,0 | 10,0 | 15,5 | 14 |
| 101.03.05.10 | 1/8 | 5 | 22,5 | 8 | 20,5 | 11,0 | 12,2 | 11 |
| 101.03.05.13 | 1/4 | 5 | 24,5 | 10 | 20,5 | 11,0 | 15,5 | 14 |
| 101.03.06.10 | 1/8 | 6 | 25,0 | 8 | 23,0 | 13,0 | 13,4 | 12 |
| 101.03.06.13 | 1/4 | 6 | 27,0 | 10 | 23,0 | 13,0 | 15,5 | 14 |
| 101.03.08.10 | 1/8 | 8 | 26,0 | 8 | 25,5 | 15,0 | 17,9 | 16 |
| 101.03.08.13 | 1/4 | 8 | 28,0 | 10 | 25,5 | 15,0 | 17,9 | 16 |
| 101.03.10.13 | 1/4 | 10 | 30,0 | 10 | 29,0 | 17,5 | 21,2 | 19 |
| 101.03.10.17 | 3/8 | 10 | 31,0 | 11 | 29,0 | 17,5 | 21,2 | 19 |
| 101.03.10.21 | 1/2 | 10 | 34,0 | 14 | 29,0 | 17,5 | 24,5 | 22 |
| 101.03.12.13 | 1/4 | 12 | 33,0 | 10 | 32,0 | 21,5 | 24,5 | 22 |
| 101.03.12.17 | 3/8 | 12 | 34,0 | 11 | 32,0 | 21,5 | 24,5 | 22 |
| 101.03.12.21 | 1/2 | 12 | 37,0 | 14 | 32,0 | 21,5 | 24,5 | 22 |
| 101.03.14.17 | 3/8 | 14 | 37,0 | 11 | 36,0 | 25,5 | 29,0 | 26 |
| 101.03.14.21 | 1/2 | 14 | 40,0 | 14 | 36,0 | 25,5 | 29,0 | 26 |



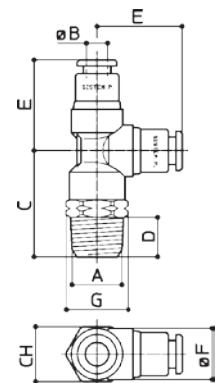
Serie

101.03.

L-Einschraubanschluss
konisches Gewinde NPT



| Artikel-Nr. | A | B | C | D | E | F | G | CH |
|--------------|-----|----|------|----|------|------|------|----|
| 101.03.04.09 | 1/8 | 4 | 23,0 | 8 | 20,0 | 10,0 | 12,2 | 11 |
| 101.03.04.12 | 1/4 | 4 | 25,0 | 10 | 20,0 | 10,0 | 15,5 | 14 |
| 101.03.06.09 | 1/8 | 6 | 25,0 | 8 | 23,0 | 13,0 | 13,4 | 12 |
| 101.03.06.12 | 1/4 | 6 | 27,0 | 10 | 23,0 | 13,0 | 15,5 | 14 |
| 101.03.08.09 | 1/8 | 8 | 26,0 | 8 | 25,5 | 15,0 | 17,9 | 16 |
| 101.03.08.12 | 1/4 | 8 | 28,0 | 10 | 25,5 | 15,0 | 17,9 | 16 |
| 101.03.10.12 | 1/4 | 10 | 30,0 | 10 | 29,0 | 17,5 | 21,2 | 19 |
| 101.03.10.16 | 3/8 | 10 | 31,0 | 11 | 29,0 | 17,5 | 21,2 | 19 |
| 101.03.12.12 | 1/4 | 12 | 33,0 | 10 | 32,0 | 21,5 | 24,5 | 22 |
| 101.03.12.16 | 3/8 | 12 | 34,0 | 11 | 32,0 | 21,5 | 24,5 | 22 |
| 101.03.12.20 | 1/2 | 12 | 37,0 | 14 | 32,0 | 21,5 | 24,5 | 22 |



Steckverbinder, Metall vernickelt

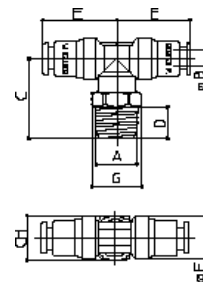
Serie

101.08.

T-Einschraubanschluss
konisches Gewinde UNI-ISO 7/1



| Artikel-Nr. | A | B | C | D | E | F | G | CH |
|--------------|-----|----|------|----|------|------|------|----|
| 101.08.04.10 | 1/8 | 4 | 21,0 | 8 | 20,0 | 10,0 | 12,2 | 11 |
| 101.08.04.13 | 1/4 | 4 | 23,0 | 10 | 20,0 | 10,0 | 15,5 | 14 |
| 101.08.05.10 | 1/8 | 5 | 22,0 | 8 | 20,5 | 11,0 | 12,2 | 11 |
| 101.08.05.13 | 1/4 | 5 | 24,0 | 10 | 20,5 | 11,0 | 15,5 | 14 |
| 101.08.06.10 | 1/8 | 6 | 23,0 | 8 | 23,0 | 13,0 | 13,4 | 12 |
| 101.08.06.13 | 1/4 | 6 | 25,0 | 10 | 23,0 | 13,0 | 15,5 | 14 |
| 101.08.08.10 | 1/8 | 8 | 24,0 | 8 | 25,0 | 15,0 | 15,5 | 14 |
| 101.08.08.13 | 1/4 | 8 | 26,0 | 10 | 25,0 | 15,0 | 15,5 | 14 |
| 101.08.08.17 | 3/8 | 8 | 26,0 | 11 | 25,0 | 15,0 | 19,0 | 17 |
| 101.08.10.13 | 1/4 | 10 | 29,0 | 10 | 28,5 | 17,5 | 21,2 | 19 |
| 101.08.10.17 | 3/8 | 10 | 30,0 | 11 | 28,5 | 17,5 | 21,2 | 19 |
| 101.08.10.21 | 1/2 | 10 | 32,0 | 14 | 28,5 | 17,5 | 24,5 | 22 |
| 101.08.12.13 | 1/4 | 12 | 30,0 | 10 | 32,0 | 21,5 | 24,5 | 22 |
| 101.08.12.17 | 3/8 | 12 | 33,0 | 11 | 32,0 | 21,5 | 24,5 | 22 |
| 101.08.12.21 | 1/2 | 12 | 35,0 | 14 | 32,0 | 21,5 | 24,5 | 22 |
| 101.08.14.17 | 3/8 | 14 | 35,0 | 11 | 36,5 | 25,5 | 29,0 | 26 |
| 101.08.14.21 | 1/2 | 14 | 38,0 | 14 | 36,5 | 25,5 | 29,0 | 26 |



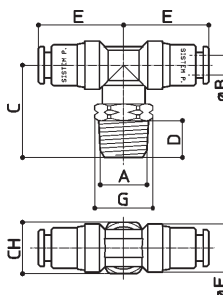
Serie

101.08.

T-Einschraubanschluss
konisches Gewinde NPT



| Artikel-Nr. | A | B | C | D | E | F | G | CH |
|--------------|-----|----|------|----|------|------|------|----|
| 101.08.04.09 | 1/8 | 4 | 21,0 | 8 | 20,0 | 10,0 | 12,2 | 11 |
| 101.08.04.12 | 1/4 | 4 | 23,0 | 10 | 20,0 | 10,0 | 15,5 | 14 |
| 101.08.06.09 | 1/8 | 6 | 23,0 | 8 | 23,0 | 13,0 | 13,4 | 12 |
| 101.08.06.12 | 1/4 | 6 | 25,0 | 10 | 23,0 | 13,0 | 15,5 | 14 |
| 101.08.08.09 | 1/8 | 8 | 24,0 | 8 | 25,0 | 15,0 | 15,5 | 14 |
| 101.08.08.12 | 1/4 | 8 | 26,0 | 10 | 25,0 | 15,0 | 15,5 | 14 |
| 101.08.10.12 | 1/4 | 10 | 29,0 | 10 | 28,5 | 17,5 | 21,2 | 19 |
| 101.08.10.16 | 3/8 | 10 | 30,0 | 11 | 28,5 | 17,5 | 21,2 | 19 |
| 101.08.12.12 | 1/4 | 12 | 30,0 | 10 | 32,0 | 21,5 | 24,5 | 22 |
| 101.08.12.16 | 3/8 | 12 | 33,0 | 11 | 32,0 | 21,5 | 24,5 | 22 |
| 101.08.12.20 | 1/2 | 12 | 35,0 | 14 | 32,0 | 21,5 | 24,5 | 22 |



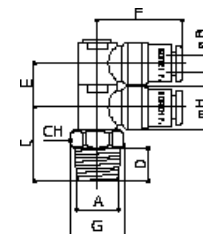
Serie

101.41.

Doppel-Winkel-Einschraubanschluss
konisches Gewinde UNI-ISO 7/1, NPT auf Anfrage



| Artikel-Nr. | A | B | C | D | E | F | G | H | CH |
|--------------|-----|----|------|----|------|----|------|------|----|
| 101.41.04.10 | 1/8 | 4 | 17,0 | 8 | 10,5 | 21 | 11,2 | 10,0 | 10 |
| 101.41.05.10 | 1/8 | 5 | 18,0 | 8 | 10,0 | 23 | 11,2 | 10,0 | 10 |
| 101.41.06.10 | 1/8 | 6 | 20,5 | 8 | 13,0 | 25 | 12,2 | 12,5 | 11 |
| 101.41.06.13 | 1/4 | 6 | 22,0 | 10 | 13,0 | 25 | 15,5 | 12,5 | 14 |
| 101.41.08.10 | 1/8 | 8 | 22,0 | 8 | 16,0 | 28 | 13,4 | 15,0 | 12 |
| 101.41.08.13 | 1/4 | 8 | 23,5 | 10 | 16,0 | 28 | 15,5 | 15,0 | 14 |
| 101.41.10.13 | 1/4 | 10 | 25,0 | 10 | 17,5 | 29 | 15,5 | 17,0 | 14 |
| 101.41.10.17 | 3/8 | 10 | 27,0 | 11 | 17,5 | 29 | 19,0 | 17,0 | 17 |



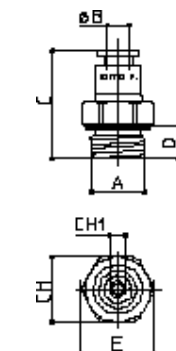
Serie

101.01.

Gerader Einschraubanschluss
zylindrisches Gewinde UNI-ISO 228/1



| Artikel-Nr. | A | B | C | D | E | F | G | CH | CH1 |
|--------------|-----|---|------|---|------|---|---|----|-----|
| 101.01.04.10 | 1/8 | 4 | 20,0 | 6 | 14,3 | | | 13 | 3 |
| 101.01.04.13 | 1/4 | 4 | 23,0 | 8 | 17,5 | | | 16 | 3 |
| 101.01.05.10 | 1/8 | 5 | 22,5 | 6 | 14,3 | | | 13 | 4 |
| 101.01.05.13 | 1/4 | 5 | 23,5 | 8 | 17,5 | | | 16 | 4 |
| 101.01.06.10 | 1/8 | 6 | 24,5 | 6 | 14,3 | | | 13 | 4 |
| 101.01.06.13 | 1/4 | 6 | 26,0 | 8 | 17,5 | | | 16 | 4 |
| 101.01.08.10 | 1/8 | 8 | 29,5 | 6 | 15,5 | | | 14 | 5 |
| 101.01.08.13 | 1/4 | 8 | 29,0 | 8 | 17,5 | | | 16 | 6 |



Steckverbinder, Metall vernickelt

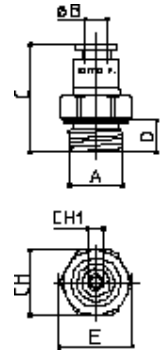
Serie 101.01.

Gerader Einschraubanschluss
zylindrisches Gewinde UNI-ISO 228/1



NEU
in 2021
NEW

| Artikel-Nr. | A | B | C | D | E | F | G | CH | CH1 |
|--------------|-----|----|------|----|------|---|---|----|-----|
| 101.01.08.17 | 3/8 | 8 | 32,0 | 10 | 22,0 | | | 20 | 6 |
| 101.01.08.21 | 1/2 | 8 | 34,0 | 12 | 26,0 | | | 24 | 6 |
| 101.01.10.10 | 1/8 | 10 | 33,0 | 6 | 18,5 | | | 17 | 5 |
| 101.01.10.13 | 1/4 | 10 | 34,0 | 8 | 19,0 | | | 17 | 8 |
| 101.01.10.17 | 3/8 | 10 | 32,0 | 10 | 22,0 | | | 20 | 8 |
| 101.01.10.21 | 1/2 | 10 | 36,0 | 12 | 26,8 | | | 24 | 8 |
| 101.01.12.13 | 1/4 | 12 | 36,0 | 8 | 23,5 | | | 21 | 8 |
| 101.01.12.17 | 3/8 | 12 | 37,0 | 10 | 23,5 | | | 21 | 10 |
| 101.01.12.21 | 1/2 | 12 | 37,0 | 12 | 26,8 | | | 24 | 10 |
| 101.01.14.17 | 3/8 | 14 | 42,0 | 10 | 28,0 | | | 25 | 10 |
| 101.01.14.21 | 1/2 | 14 | 44,0 | 12 | 28,0 | | | 25 | 12 |
| 101.01.16.21 | 1/2 | 16 | 45,0 | 12 | 30,0 | | | 27 | 13 |
| 101.01.16.27 | 3/4 | 16 | 45,0 | 12 | 34,0 | | | 30 | 13 |



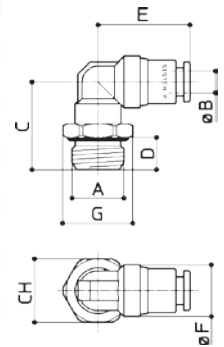
Serie 101.91.

Winkel-Einschraubanschluss
zylindrisches Gewinde UNI-ISO 228/1



NEU
in 2021
NEW

| Artikel-Nr. | A | B | C | D | E | F | G | CH | CH1 |
|--------------|-----|----|------|----|------|------|------|----|-----|
| 101.91.04.10 | 1/8 | 4 | 19,0 | 6 | 20,0 | 10,0 | 14,3 | 13 | |
| 101.91.04.13 | 1/4 | 4 | 21,5 | 8 | 20,0 | 10,0 | 17,5 | 16 | |
| 101.91.05.10 | 1/8 | 5 | 21,0 | 6 | 20,0 | 11,0 | 14,3 | 13 | |
| 101.91.05.13 | 1/4 | 5 | 23,0 | 8 | 20,0 | 11,0 | 17,5 | 16 | |
| 101.91.06.10 | 1/8 | 6 | 20,5 | 6 | 23,0 | 13,0 | 14,3 | 13 | |
| 101.91.06.13 | 1/4 | 6 | 22,0 | 8 | 23,0 | 13,0 | 17,5 | 16 | |
| 101.91.06.17 | 3/8 | 6 | 26,3 | 10 | 23,6 | 13,0 | 22,0 | 20 | |
| 101.91.08.10 | 1/8 | 8 | 21,5 | 6 | 25,0 | 15,0 | 15,5 | 14 | |
| 101.91.08.13 | 1/4 | 8 | 23,0 | 8 | 25,0 | 15,0 | 17,5 | 16 | |
| 101.91.08.17 | 3/8 | 8 | 26,5 | 10 | 25,0 | 15,0 | 22,0 | 20 | |
| 101.91.08.21 | 1/2 | 8 | 28,5 | 8 | 25,0 | 15,0 | 26,0 | 24 | |
| 101.91.10.10 | 1/8 | 10 | 28,5 | 6 | 28,5 | 17,5 | 20,7 | 19 | |
| 101.91.10.13 | 1/4 | 10 | 29,0 | 8 | 28,5 | 17,5 | 20,7 | 19 | |
| 101.91.10.17 | 3/8 | 10 | 30,5 | 10 | 28,5 | 17,5 | 22,0 | 20 | |
| 101.91.10.21 | 1/2 | 10 | 33,0 | 12 | 28,5 | 17,5 | 26,8 | 24 | |
| 101.91.12.13 | 1/4 | 12 | 28,5 | 8 | 32,0 | 21,5 | 24,5 | 22 | |
| 101.91.12.17 | 3/8 | 12 | 31,0 | 10 | 32,0 | 21,5 | 24,5 | 22 | |
| 101.91.12.21 | 1/2 | 12 | 34,0 | 12 | 32,0 | 21,5 | 26,8 | 24 | |
| 101.91.14.17 | 3/8 | 14 | 34,0 | 10 | 36,5 | 25,5 | 29,0 | 26 | |
| 101.91.14.21 | 1/2 | 14 | 36,0 | 12 | 36,5 | 25,5 | 29,0 | 26 | |
| 101.91.16.21 | 1/2 | 16 | 36,0 | 12 | 40,0 | 27,0 | 31,0 | 28 | |
| 101.91.16.27 | 3/4 | 16 | 36,0 | 12 | 40,0 | 27,0 | 32,0 | 30 | |



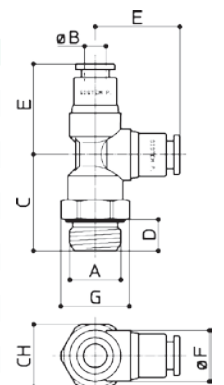
Serie 101.93.

L-Einschraubanschluss
zylindrisches Gewinde UNI-ISO 228/1



NEU
in 2021
NEW

| Artikel-Nr. | A | B | C | D | E | F | G | CH | CH1 |
|--------------|-----|----|------|----|------|------|------|----|-----|
| 101.93.04.10 | 1/8 | 4 | 20,0 | 6 | 20,0 | 10,0 | 14,3 | 13 | |
| 101.93.04.13 | 1/4 | 4 | 23,5 | 8 | 20,0 | 10,0 | 17,5 | 16 | |
| 101.93.05.10 | 1/8 | 5 | 21,0 | 6 | 20,5 | 11,0 | 14,3 | 13 | |
| 101.93.05.13 | 1/4 | 5 | 23,0 | 8 | 20,5 | 11,0 | 17,5 | 16 | |
| 101.93.06.10 | 1/8 | 6 | 22,0 | 6 | 23,0 | 13,0 | 14,3 | 14 | |
| 101.93.06.13 | 1/4 | 6 | 24,5 | 8 | 23,0 | 13,0 | 17,5 | 16 | |
| 101.93.08.10 | 1/8 | 8 | 24,0 | 6 | 25,5 | 15,0 | 15,5 | 16 | |
| 101.93.08.13 | 1/4 | 8 | 25,0 | 8 | 25,5 | 15,0 | 17,5 | 16 | |
| 101.93.10.13 | 1/4 | 10 | 28,0 | 8 | 29,0 | 17,5 | 20,7 | 19 | |
| 101.93.10.17 | 3/8 | 10 | 32,0 | 10 | 29,0 | 17,5 | 22,0 | 20 | |
| 101.93.10.21 | 1/2 | 10 | 32,0 | 12 | 29,0 | 17,5 | 26,8 | 24 | |
| 101.93.12.13 | 1/4 | 12 | 31,0 | 8 | 31,0 | 21,5 | 24,5 | 22 | |
| 101.93.12.17 | 3/8 | 12 | 33,0 | 10 | 31,0 | 21,5 | 24,5 | 22 | |
| 101.93.12.21 | 1/2 | 12 | 36,0 | 12 | 31,0 | 21,5 | 26,8 | 24 | |
| 101.93.14.17 | 3/8 | 14 | 37,0 | 10 | 36,0 | 25,5 | 29,0 | 26 | |
| 101.93.14.21 | 1/2 | 14 | 39,0 | 12 | 36,0 | 25,5 | 29,0 | 26 | |



Steckverbinder, Metall vernickelt

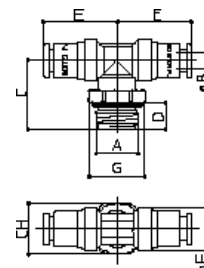
Serie

101.98.

T-Einschraubanschluss
zylindrisches Gewinde UNI-ISO 228/1



| Artikel-Nr. | A | B | C | D | E | F | G | CH | CH1 |
|--------------|-----|----|------|----|------|------|------|----|-----|
| 101.98.04.10 | 1/8 | 4 | 19,0 | 6 | 20,0 | 10,0 | 14,3 | 13 | |
| 101.98.04.13 | 1/4 | 4 | 21,5 | 8 | 20,0 | 10,0 | 17,5 | 16 | |
| 101.98.05.10 | 1/8 | 5 | 21,0 | 6 | 20,0 | 11,0 | 14,3 | 13 | |
| 101.98.05.13 | 1/4 | 5 | 23,0 | 8 | 20,0 | 11,0 | 17,5 | 16 | |
| 101.98.06.10 | 1/8 | 6 | 20,5 | 6 | 23,0 | 13,0 | 14,3 | 13 | |
| 101.98.06.13 | 1/4 | 6 | 22,0 | 8 | 23,0 | 13,0 | 17,5 | 16 | |
| 101.98.08.10 | 1/8 | 8 | 21,5 | 6 | 25,0 | 15,0 | 15,5 | 14 | |
| 101.98.08.13 | 1/4 | 8 | 23,0 | 8 | 25,0 | 15,0 | 17,5 | 16 | |
| 101.98.08.17 | 3/8 | 8 | 26,5 | 10 | 25,0 | 15,0 | 22,0 | 20 | |
| 101.98.10.13 | 1/4 | 10 | 29,0 | 8 | 28,5 | 17,5 | 20,7 | 19 | |
| 101.98.10.17 | 3/8 | 10 | 30,5 | 10 | 28,5 | 17,5 | 22,0 | 20 | |
| 101.98.10.21 | 1/2 | 10 | 31,0 | 12 | 28,5 | 17,5 | 26,8 | 24 | |
| 101.98.12.13 | 1/4 | 12 | 28,5 | 8 | 32,0 | 21,5 | 24,5 | 22 | |
| 101.98.12.17 | 3/8 | 12 | 31,0 | 10 | 32,0 | 21,5 | 24,5 | 22 | |
| 101.98.12.21 | 1/2 | 12 | 34,0 | 12 | 32,0 | 21,5 | 26,8 | 24 | |
| 101.98.14.17 | 3/8 | 14 | 34,0 | 10 | 36,5 | 25,5 | 29,0 | 26 | |
| 101.98.14.21 | 1/2 | 14 | 36,0 | 12 | 36,5 | 25,5 | 29,0 | 26 | |
| 101.98.16.21 | 1/2 | 16 | 36,0 | 12 | 40,0 | 27,0 | 31,0 | 28 | |
| 101.98.16.27 | 3/4 | 16 | 36,0 | 12 | 40,0 | 27,0 | 32,0 | 30 | |



NEU
in 2021
NEW

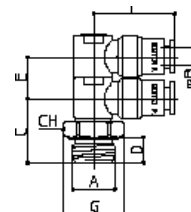
Serie

101.42.

Doppel-Winkel-Einschraubanschluss
zylindrisches Gewinde UNI-ISO 228/1



| Artikel-Nr. | A | B | C | D | E | F | G | CH | CH1 |
|--------------|-----|---|------|---|------|----|------|----|-----|
| 101.42.04.10 | 1/8 | 4 | 16,5 | 6 | 10,5 | 21 | 14,3 | 13 | |
| 101.42.05.10 | 1/8 | 5 | 16,0 | 6 | 10,0 | 23 | 14,3 | 13 | |
| 101.42.06.10 | 1/8 | 6 | 18,0 | 6 | 13,0 | 25 | 14,3 | 13 | |



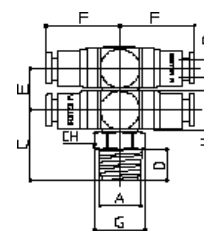
Serie

101.45.

Doppel-T-Einschraubanschluss
konisches Gewinde UNI-ISO 7/1



| Artikel-Nr. | A | B | C | D | E | F | G | H | CH |
|--------------|-----|----|------|----|------|----|------|------|----|
| 101.45.04.10 | 1/8 | 4 | 17,0 | 8 | 10,5 | 19 | 11,2 | 10,0 | 10 |
| 101.45.05.10 | 1/8 | 5 | 17,0 | 8 | 10,5 | 21 | 11,2 | 10,0 | 10 |
| 101.45.06.10 | 1/8 | 6 | 19,0 | 8 | 13,0 | 24 | 12,2 | 12,5 | 11 |
| 101.45.06.13 | 1/4 | 6 | 22,0 | 10 | 13,0 | 24 | 15,5 | 12,5 | 14 |
| 101.45.08.10 | 1/8 | 8 | 20,0 | 8 | 15,0 | 26 | 13,4 | 14,0 | 12 |
| 101.45.08.13 | 1/4 | 8 | 23,5 | 10 | 15,5 | 26 | 15,5 | 14,0 | 14 |
| 101.45.10.13 | 1/4 | 10 | 25,0 | 10 | 17,5 | 29 | 15,5 | 17,0 | 14 |
| 101.45.10.17 | 3/8 | 10 | 27,0 | 11 | 17,5 | 29 | 19,0 | 17,0 | 17 |



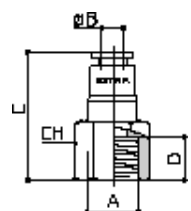
Serie

101.14.

Gerader Aufsraubanschluss
zylindrisches Gewinde UNI-ISO 228/1



| Artikel-Nr. | A | B | C | D | E | F | G | CH | CH1 |
|--------------|-----|----|----|----|---|---|---|----|-----|
| 101.14.04.08 | M5 | 4 | 24 | 6 | | | | 9 | |
| 101.14.04.10 | 1/8 | 4 | 27 | 8 | | | | 12 | |
| 101.14.04.13 | 1/4 | 4 | 30 | 10 | | | | 16 | |
| 101.14.05.10 | 1/8 | 5 | 27 | 8 | | | | 12 | |
| 101.14.06.10 | 1/8 | 6 | 31 | 8 | | | | 13 | |
| 101.14.06.13 | 1/4 | 6 | 32 | 10 | | | | 16 | |
| 101.14.08.10 | 1/8 | 8 | 33 | 8 | | | | 15 | |
| 101.14.08.13 | 1/4 | 8 | 34 | 10 | | | | 16 | |
| 101.14.10.13 | 1/4 | 10 | 36 | 10 | | | | 17 | |
| 101.14.10.17 | 3/8 | 10 | 36 | 11 | | | | 20 | |
| 101.14.12.13 | 1/4 | 12 | 39 | 10 | | | | 21 | |
| 101.14.12.17 | 3/8 | 12 | 39 | 11 | | | | 21 | |



Steckverbinder, Metall vernickelt

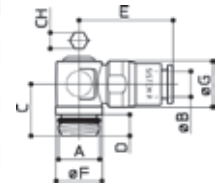
Serie

101.90.

Winkel-Einschraubanschluss mit Innensechskant
zylindrisches Gewinde UNI-ISO 228/1



| Artikel-Nr. | A | B | C | D | E | F | G | H | CH |
|--------------|-----|---|------|---|------|------|------|---|----|
| 101.90.04.10 | 1/8 | 4 | 13,5 | 5 | 22,5 | 11,0 | 11,5 | | 4 |
| 101.90.04.13 | 1/4 | 4 | 15,0 | 6 | 22,5 | 14,3 | 11,5 | | 4 |
| 101.90.06.10 | 1/8 | 6 | 13,5 | 5 | 25,5 | 11,0 | 13,8 | | 4 |
| 101.90.06.13 | 1/4 | 6 | 15,0 | 6 | 25,5 | 14,3 | 13,8 | | 4 |
| 101.90.08.10 | 1/8 | 8 | 13,5 | 5 | 27,0 | 11,0 | 14,5 | | 4 |
| 101.90.08.13 | 1/4 | 8 | 15,0 | 6 | 27,0 | 14,3 | 14,5 | | 4 |



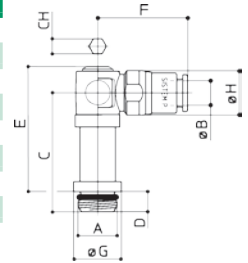
Serie

101.29.

Winkel-Einschraubanschluss mit Innensechskant, lang
zylindrisches Gewinde UNI-ISO 228/1



| Artikel-Nr. | A | B | C | D | E | F | G | CH | CH1 |
|--------------|-----|---|------|---|------|------|------|----|-----|
| 101.29.04.10 | 1/8 | 4 | 30,5 | 5 | 22,5 | 11,0 | 11,5 | 4 | 10 |
| 101.29.04.13 | 1/4 | 4 | 32,0 | 6 | 22,5 | 14,3 | 11,5 | 4 | 10 |
| 101.29.06.10 | 1/8 | 6 | 30,5 | 5 | 25,5 | 11,0 | 13,8 | 4 | 10 |
| 101.29.06.13 | 1/4 | 6 | 32,0 | 6 | 25,5 | 14,3 | 13,8 | 4 | 10 |
| 101.29.08.10 | 1/8 | 8 | 30,5 | 5 | 27,0 | 11,0 | 14,5 | 4 | 10 |
| 101.29.08.13 | 1/4 | 8 | 32,0 | 6 | 27,0 | 14,3 | 14,5 | 4 | 10 |



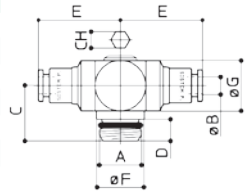
Serie

101.97.

T-Einschraubanschluss mit Innensechskant
zylindrisches Gewinde UNI-ISO 228/1



| Artikel-Nr. | A | B | C | D | E | F | G | CH |
|--------------|-----|---|------|---|------|------|----|----|
| 101.97.04.10 | 1/8 | 4 | 13,5 | 5 | 23,5 | 11,0 | 14 | 4 |
| 101.97.04.13 | 1/4 | 4 | 15,0 | 6 | 23,5 | 14,3 | 14 | 4 |
| 101.97.06.10 | 1/8 | 6 | 13,5 | 5 | 24,0 | 11,0 | 14 | 4 |
| 101.97.06.13 | 1/4 | 6 | 15,0 | 6 | 24,0 | 14,3 | 14 | 4 |
| 101.97.08.10 | 1/8 | 8 | 13,5 | 5 | 25,5 | 11,0 | 14 | 4 |
| 101.97.08.13 | 1/4 | 8 | 15,0 | 6 | 25,5 | 14,3 | 14 | 4 |



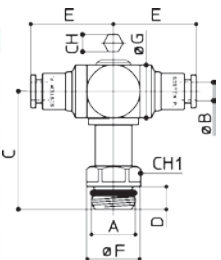
Serie

101.96.

T-Einschraubanschluss mit Innensechskant, lang
zylindrisches Gewinde UNI-ISO 228/1



| Artikel-Nr. | A | B | C | D | E | F | G | CH |
|--------------|-----|---|------|---|------|------|----|----|
| 101.96.04.10 | 1/8 | 4 | 30,5 | 5 | 23,5 | 11,0 | 14 | 4 |
| 101.96.04.13 | 1/4 | 4 | 32,0 | 6 | 23,5 | 14,3 | 14 | 4 |
| 101.96.06.10 | 1/8 | 6 | 30,5 | 5 | 24,0 | 11,0 | 14 | 4 |
| 101.96.06.13 | 1/4 | 6 | 32,0 | 6 | 24,0 | 14,3 | 14 | 4 |
| 101.96.08.10 | 1/8 | 8 | 30,5 | 5 | 25,5 | 11,0 | 14 | 4 |
| 101.96.08.13 | 1/4 | 8 | 32,0 | 6 | 25,5 | 14,3 | 14 | 4 |



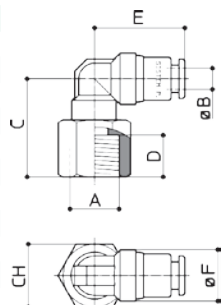
Serie

101.69.

Winkel-Aufschraubanschluss
zylindrisches Gewinde UNI-ISO 228/1



| Artikel-Nr. | A | B | C | D | E | F | G | CH | CH1 |
|--------------|-----|----|----|----|------|------|---|----|-----|
| 101.69.04.10 | 1/8 | 4 | 22 | 8 | 20,0 | 10,0 | | 12 | |
| 101.69.05.10 | 1/8 | 5 | 22 | 8 | 20,5 | 11,0 | | 12 | |
| 101.69.06.10 | 1/8 | 6 | 23 | 8 | 23,0 | 13,0 | | 12 | |
| 101.69.06.13 | 1/4 | 6 | 25 | 10 | 23,0 | 13,0 | | 16 | |
| 101.69.08.10 | 1/8 | 8 | 25 | 8 | 25,0 | 15,0 | | 14 | |
| 101.69.08.13 | 1/4 | 8 | 26 | 10 | 25,0 | 15,0 | | 16 | |
| 101.69.10.13 | 1/4 | 10 | 31 | 10 | 28,5 | 17,5 | | 19 | |
| 101.69.10.17 | 3/8 | 10 | 33 | 11 | 28,5 | 17,5 | | 20 | |
| 101.69.12.13 | 1/4 | 12 | 33 | 10 | 32,0 | 21,5 | | 22 | |
| 101.69.12.17 | 3/8 | 12 | 33 | 11 | 32,0 | 21,5 | | 22 | |



Steckverbinder, Metall vernickelt

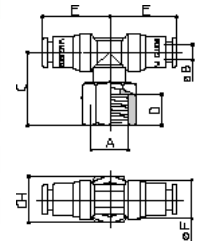
Serie

101.78.



T-Aufschraubanschluss
zylindrisches Gewinde UNI-ISO 228/1

| Artikel-Nr. | A | B | C | D | E | F | G | CH | CH1 |
|--------------|-----|----|----|----|------|------|---|----|-----|
| 101.78.04.10 | 1/8 | 4 | 22 | 8 | 20,0 | 10,0 | | 12 | |
| 101.78.05.10 | 1/8 | 5 | 22 | 8 | 20,5 | 11,0 | | 12 | |
| 101.78.06.10 | 1/8 | 6 | 23 | 8 | 23,0 | 13,0 | | 12 | |
| 101.78.06.13 | 1/4 | 6 | 25 | 10 | 23,0 | 13,0 | | 16 | |
| 101.78.08.10 | 1/8 | 8 | 24 | 8 | 25,5 | 15,0 | | 14 | |
| 101.78.08.13 | 1/4 | 8 | 26 | 10 | 25,0 | 15,0 | | 16 | |
| 101.78.10.13 | 1/4 | 10 | 28 | 10 | 28,5 | 17,5 | | 19 | |
| 101.78.10.17 | 3/8 | 10 | 30 | 11 | 29,0 | 17,5 | | 20 | |
| 101.78.12.13 | 1/4 | 12 | 33 | 10 | 32,0 | 21,5 | | 22 | |
| 101.78.12.17 | 3/8 | 12 | 33 | 11 | 32,0 | 21,5 | | 22 | |



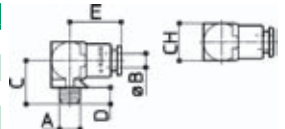
Serie

101.09.



Winkel-Einschraubanschluss, fest
metrisches Gewinde UNI-5542-65

| Artikel-Nr. | A | B | C | D | E | F | G | CH | CH1 |
|--------------|----------|---|------|---|------|---|---|----|-----|
| 101.09.04.08 | M5 | 4 | 11,5 | 5 | 12,5 | | | 9 | |
| 101.09.04.31 | M6x 0,75 | 4 | 9,5 | 5 | 12,5 | | | 9 | |
| 101.09.04.32 | M6x1 | 4 | 9,5 | 5 | 12,5 | | | 9 | |



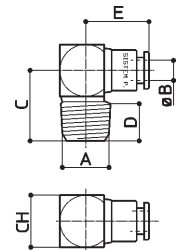
Serie

101.09.



Winkel-Einschraubanschluss, fest
konisches Gewinde UNI-ISO 7/1

| Artikel-Nr. | A | B | C | D | E | F | G | CH | CH1 |
|--------------|-----|----|------|----|------|---|---|----|-----|
| 101.09.04.10 | 1/8 | 4 | 15,0 | 8 | 13,0 | | | 10 | |
| 101.09.04.13 | 1/4 | 4 | 17,0 | 10 | 15,0 | | | 14 | |
| 101.09.05.10 | 1/8 | 5 | 15,0 | 8 | 13,0 | | | 10 | |
| 101.09.05.13 | 1/4 | 5 | 18,5 | 10 | 15,0 | | | 14 | |
| 101.09.06.10 | 1/8 | 6 | 19,5 | 8 | 16,5 | | | 12 | |
| 101.09.06.13 | 1/4 | 6 | 19,0 | 10 | 17,0 | | | 14 | |
| 101.09.08.10 | 1/8 | 8 | 19,0 | 8 | 19,0 | | | 14 | |
| 101.09.08.13 | 1/4 | 8 | 20,0 | 10 | 18,5 | | | 14 | |
| 101.09.10.13 | 1/4 | 10 | 21,5 | 10 | 20,5 | | | 17 | |
| 101.09.10.17 | 3/8 | 10 | 23,0 | 11 | 20,5 | | | 17 | |
| 101.09.12.17 | 3/8 | 12 | 30,5 | 11 | 38,5 | | | 22 | |
| 101.09.12.21 | 1/2 | 12 | 30,5 | 14 | 38,5 | | | 22 | |
| 101.09.14.17 | 3/8 | 14 | 30,5 | 11 | 42,5 | | | 22 | |
| 101.09.14.21 | 1/2 | 14 | 30,5 | 14 | 42,5 | | | 22 | |



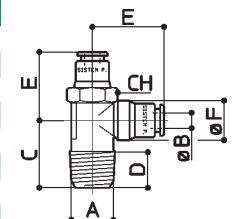
Serie

101.23.



L-Einschraubanschluss, fest
konisches Gewinde UNI-ISO 7/1

| Artikel-Nr. | A | B | C | D | E | F | G | CH | CH1 |
|--------------|-----|----|----|----|----|------|---|----|-----|
| 101.23.04.10 | 1/8 | 4 | 15 | 8 | 20 | 10,0 | | 10 | |
| 101.23.06.10 | 1/8 | 6 | 20 | 8 | 23 | 13,0 | | 13 | |
| 101.23.12.17 | 3/8 | 12 | 34 | 11 | 32 | 21,5 | | 22 | |
| 101.23.12.21 | 1/2 | 14 | 37 | 14 | 32 | 21,5 | | 22 | |
| 101.23.14.17 | 3/8 | 14 | 37 | 11 | 36 | 25,5 | | 23 | |
| 101.23.14.21 | 1/2 | 14 | 40 | 14 | 36 | 25,5 | | 26 | |



Steckverbinder, Metall vernickelt

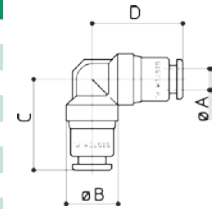
Serie 101.02.



NEU
in 2021
NEW

Winkel-Verbinder

| Artikel-Nr. | A | B | C | D | E | F | G | CH | CH1 |
|--------------|----|------|------|------|---|---|---|----|-----|
| 101.02.04.00 | 4 | 10,0 | 19,0 | 19,0 | | | | | |
| 101.02.05.00 | 5 | 11,0 | 20,0 | 20,0 | | | | | |
| 101.02.06.00 | 6 | 13,0 | 23,0 | 23,0 | | | | | |
| 101.02.08.00 | 8 | 15,0 | 25,0 | 25,0 | | | | | |
| 101.02.10.00 | 10 | 17,5 | 28,5 | 28,5 | | | | | |
| 101.02.12.00 | 12 | 21,5 | 31,5 | 29,5 | | | | | |
| 101.02.14.00 | 14 | 25,5 | 36,5 | 33,5 | | | | | |
| 101.02.16.00 | 16 | 27,0 | 35,0 | 40,0 | | | | | |



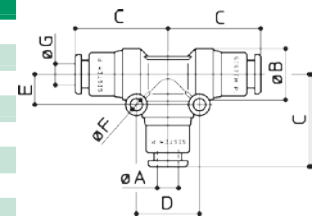
Serie 101.04.



NEU
in 2021
NEW

T-Verbinder

| Artikel-Nr. | A | B | C | D | E | F | G | CH | CH1 |
|-----------------|----|------|------|------|----|-----|----|----|-----|
| 101.04.04.00 | 4 | 10,0 | 19,5 | 12,0 | 6 | 2,7 | 4 | | |
| 101.04.05.00 | 5 | 11,0 | 20,5 | - | - | - | 5 | | |
| 101.04.06.00 | 6 | 13,0 | 23,5 | 16,0 | 8 | 3,2 | 6 | | |
| 101.04.08.00 | 8 | 15,0 | 26,0 | 18,0 | 9 | 3,2 | 8 | | |
| 101.04.10.00 | 10 | 17,5 | 29,0 | 22,0 | 11 | 4,2 | 10 | | |
| 101.04.12.00 | 12 | 21,5 | 31,0 | - | - | - | 12 | | |
| 101.04.14.00 | 14 | 25,5 | 35,0 | - | - | - | 14 | | |
| 101.04.16.00 | 16 | 27,0 | 40,0 | - | - | - | 16 | | |
| 101.04.08.00.04 | 4 | 15,0 | 20,5 | 18 | 9 | 3,2 | 8 | | |



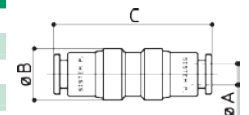
Serie 101.06.



NEU
in 2021
NEW

Gerader Verbinder

| Artikel-Nr. | A | B | C | D | E | F | G | CH | CH1 |
|--------------|----|----|----|---|---|---|---|----|-----|
| 101.06.04.00 | 4 | 10 | 34 | | | | | | |
| 101.06.05.00 | 5 | 11 | 34 | | | | | | |
| 101.06.06.00 | 6 | 13 | 40 | | | | | | |
| 101.06.08.00 | 8 | 15 | 43 | | | | | | |
| 101.06.10.00 | 10 | 18 | 47 | | | | | | |
| 101.06.12.00 | 12 | 21 | 52 | | | | | | |
| 101.06.14.00 | 14 | 25 | 57 | | | | | | |
| 101.06.16.00 | 16 | 27 | 60 | | | | | | |



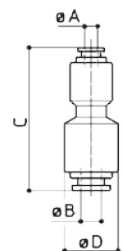
Serie 101.06.



Gerader Reduzier-Verbinder

| Artikel-Nr. | A | B | C | D | E | F | G | CH | CH1 |
|--------------|---|---|------|----|---|---|---|----|-----|
| 101.06.04.05 | 5 | 4 | 34,5 | 11 | | | | | |
| 101.06.04.06 | 6 | 4 | 39,0 | 14 | | | | | |
| 101.06.05.06 | 6 | 5 | 38,5 | 13 | | | | | |

siehe auch Serie 102.06., Seite 57/58



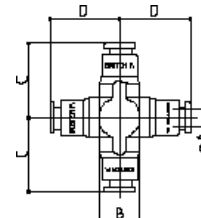
Steckverbinder, Metall vernickelt

Serie 101.07.



Kreuz-Verbinder

| Artikel-Nr. | A | B | C | D | E | F | G | CH | CH1 |
|--------------|----|----|------|------|---|---|---|----|-----|
| 101.07.04.00 | 4 | 10 | 20,0 | 19,5 | | | | | |
| 101.07.05.00 | 5 | 10 | 20,5 | 20,5 | | | | | |
| 101.07.06.00 | 6 | 12 | 24,0 | 26,0 | | | | | |
| 101.07.08.00 | 8 | 14 | 26,0 | 29,0 | | | | | |
| 101.07.10.00 | 10 | 17 | 31,0 | 33,0 | | | | | |
| 101.07.12.00 | 12 | 21 | 34,0 | 36,0 | | | | | |

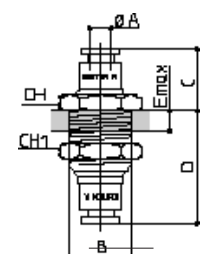


Serie 101.16.



Schott-Verbinder

| Artikel-Nr. | A | B | C | D | E | F | G | CH | CH1 |
|--------------|----|---------|------|------|----|---|---|----|-----|
| 101.16.04.00 | 4 | M12x1 | 14,0 | 24,5 | 10 | | | 13 | 14 |
| 101.16.05.00 | 5 | M12x1 | 15,0 | 25,0 | 10 | | | 13 | 14 |
| 101.16.06.00 | 6 | M15x1 | 16,5 | 28,5 | 11 | | | 18 | 18 |
| 101.16.08.00 | 8 | M17x1 | 18,5 | 32,0 | 13 | | | 20 | 20 |
| 101.16.10.00 | 10 | M20x1,5 | 19,0 | 32,5 | 13 | | | 22 | 22 |
| 101.16.12.00 | 12 | M22x1,5 | 20,0 | 34,0 | 13 | | | 25 | 25 |
| 101.16.14.00 | 14 | M27x1,5 | 22,0 | 34,0 | 13 | | | 30 | 30 |

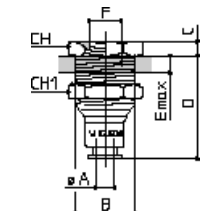


Serie 101.32.



Aufschraub-Schott-Verbinder
zylindrisches Gewinde UNI-ISO 228/1

| Artikel-Nr. | A | B | C | D | E | F | G | CH | CH1 |
|--------------|----|---------|-----|------|----|-----|---|----|-----|
| 101.32.04.10 | 4 | M12x1 | 4,0 | 24,5 | 10 | 1/8 | | 14 | 14 |
| 101.32.06.10 | 6 | M15x1 | 4,0 | 28,5 | 11 | 1/8 | | 18 | 18 |
| 101.32.08.13 | 8 | M17x1 | 4,5 | 32,0 | 13 | 1/4 | | 20 | 20 |
| 101.32.10.13 | 10 | M20x1,5 | 4,5 | 32,5 | 13 | 1/4 | | 22 | 22 |
| 101.32.12.17 | 12 | M22x1,5 | 4,5 | 34,0 | 13 | 3/8 | | 25 | 25 |

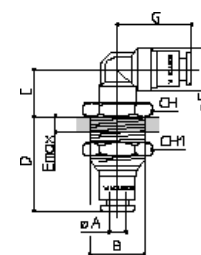


Serie 101.33.



Winkel-Schott-Verbinder

| Artikel-Nr. | A | B | C | D | E | F | G | CH | CH1 |
|--------------|----|---------|------|------|----|------|------|----|-----|
| 101.33.04.00 | 4 | M12x1 | 12,5 | 24,5 | 10 | 10,0 | 20,0 | 13 | 14 |
| 101.33.05.00 | 5 | M12x1 | 14,5 | 24,5 | 10 | 11,0 | 20,5 | 13 | 14 |
| 101.33.06.00 | 6 | M15x1 | 14,5 | 28,5 | 11 | 13,0 | 23,0 | 18 | 18 |
| 101.33.08.00 | 8 | M17x1 | 15,5 | 32,0 | 13 | 15,0 | 25,0 | 20 | 20 |
| 101.33.10.00 | 10 | M20x1,5 | 19,5 | 32,5 | 13 | 17,5 | 28,5 | 22 | 22 |
| 101.33.12.00 | 12 | M22x1,5 | 20,5 | 34,0 | 13 | 21,5 | 32,0 | 25 | 25 |

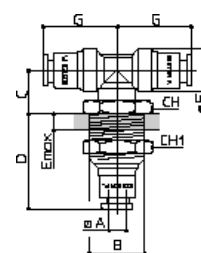


Serie 101.34.



T-Schott-Verbinder

| Artikel-Nr. | A | B | C | D | E | F | G | CH | CH1 |
|--------------|----|---------|------|------|----|------|------|----|-----|
| 101.34.04.00 | 4 | M12x1 | 12,5 | 24,5 | 10 | 10,0 | 20,0 | 13 | 14 |
| 101.34.05.00 | 5 | M12x1 | 14,5 | 24,5 | 10 | 11,0 | 20,5 | 13 | 14 |
| 101.34.06.00 | 6 | M15x1 | 14,5 | 28,5 | 11 | 13,0 | 23,0 | 18 | 18 |
| 101.34.08.00 | 8 | M17x1 | 15,5 | 32,0 | 13 | 15,0 | 25,0 | 20 | 20 |
| 101.34.10.00 | 10 | M20x1,5 | 19,5 | 32,5 | 13 | 17,5 | 28,5 | 22 | 22 |
| 101.34.12.00 | 12 | M22x1,5 | 20,5 | 34,0 | 13 | 21,5 | 32,0 | 25 | 25 |



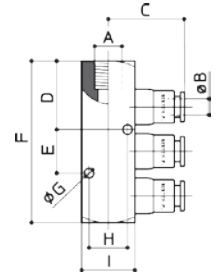
Steckverbinder, Metall vernickelt

Serie 101.30.



3-Wege-Verteiler-Block
zylindrisches Gewinde UNI-ISO 228/1

| Artikel-Nr. | A | B | C | D | E | F | G | H | I |
|--------------|-----|----|----|------|----|----|------|------|-------|
| 101.30.04.10 | 1/8 | 4 | 23 | 22,0 | 15 | 56 | 3,25 | 13,0 | 18x18 |
| 101.30.05.10 | 1/8 | 5 | 24 | 23,0 | 15 | 56 | 3,25 | 13,0 | 18x18 |
| 101.30.06.10 | 1/8 | 6 | 29 | 23,0 | 15 | 56 | 3,25 | 13,0 | 18x18 |
| 101.30.06.13 | 1/4 | 6 | 30 | 27,0 | 15 | 58 | 3,70 | 14,3 | 20x20 |
| 101.30.06.17 | 3/8 | 6 | 30 | 30,0 | 17 | 66 | 3,70 | 14,3 | 20x20 |
| 101.30.08.17 | 3/8 | 8 | 32 | 30,0 | 17 | 66 | 3,70 | 14,3 | 20x20 |
| 101.30.10.17 | 3/8 | 10 | 40 | 33,0 | 40 | 78 | 4,60 | 21,5 | 30x20 |
| 101.30.10.21 | 1/2 | 10 | 40 | 33,0 | 40 | 78 | 4,60 | 21,5 | 30x25 |
| 101.30.12.21 | 1/2 | 12 | 42 | 38,5 | 44 | 87 | 4,60 | 21,5 | 30x25 |

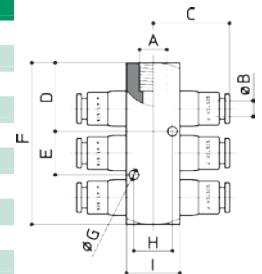


Serie 101.60.



6-Wege-Verteiler-Block
zylindrisches Gewinde UNI-ISO 228/1

| Artikel-Nr. | A | B | C | D | E | F | G | H | I |
|--------------|-----|----|----|------|----|----|------|------|-------|
| 101.60.04.10 | 1/8 | 4 | 23 | 22,0 | 15 | 56 | 3,25 | 13,0 | 18x18 |
| 101.60.05.10 | 1/8 | 5 | 24 | 23,0 | 15 | 56 | 3,25 | 13,0 | 18x18 |
| 101.60.06.10 | 1/8 | 6 | 29 | 23,0 | 15 | 56 | 3,25 | 13,0 | 18x18 |
| 101.60.06.13 | 1/4 | 6 | 30 | 27,0 | 15 | 58 | 3,70 | 14,3 | 20x20 |
| 101.60.06.17 | 3/8 | 6 | 30 | 30,0 | 17 | 66 | 3,70 | 14,3 | 20x20 |
| 101.60.08.17 | 3/8 | 8 | 32 | 30,0 | 17 | 66 | 3,70 | 14,3 | 20x20 |
| 101.60.10.17 | 3/8 | 10 | 40 | 33,0 | 40 | 78 | 4,60 | 22,0 | 30x20 |
| 101.60.10.21 | 1/2 | 10 | 40 | 33,0 | 40 | 78 | 4,60 | 22,0 | 30x25 |
| 101.60.12.21 | 1/2 | 12 | 42 | 38,5 | 44 | 87 | 4,60 | 22,0 | 30x25 |

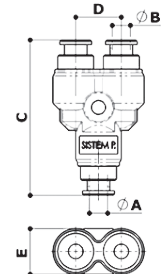


Serie 101.40.



Y-Steckanschluss

| Artikel-Nr. | A | B | C | D | E | F | G | CH | CH1 |
|-----------------|---|---|------|----|----|---|---|----|-----|
| 101.40.04.00.SP | 4 | 4 | 34,5 | 10 | 10 | | | | |
| 101.40.04.06.SP | 6 | 4 | 37,5 | 13 | 13 | | | | |
| 101.40.06.00.SP | 6 | 6 | 41,0 | 13 | 13 | | | | |
| 101.40.06.08.SP | 8 | 6 | 41,6 | 15 | 15 | | | | |
| 101.40.08.00.SP | 8 | 8 | 43,5 | 15 | 15 | | | | |

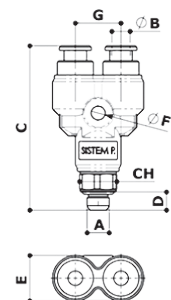


Serie 101.48.



Y-Einschraub-Steckanschluss,
zylindrisches Gewinde UNI-ISO 228/1

| Artikel-Nr. | A | B | C | D | E | F | G | CH | CH1 |
|--------------|-----|---|------|---|----|---|----|----|-----|
| 101.48.04.08 | M5 | 4 | 34,6 | 4 | 10 | 3 | 10 | 8 | |
| 101.48.04.10 | 1/8 | 4 | 36,9 | 5 | 10 | 3 | 10 | 10 | |
| 101.48.04.13 | 1/4 | 4 | 38,6 | 6 | 10 | 3 | 10 | 10 | |
| 101.48.06.10 | 1/8 | 6 | 42,4 | 5 | 13 | 3 | 13 | 11 | |
| 101.48.06.13 | 1/4 | 6 | 43,3 | 6 | 13 | 3 | 13 | 11 | |
| 101.48.08.10 | 1/8 | 8 | 44,8 | 6 | 15 | 3 | 15 | 13 | |
| 101.48.08.13 | 1/4 | 8 | 44,7 | 6 | 15 | 3 | 15 | 13 | |
| 101.48.08.17 | 3/8 | 8 | 47,6 | 8 | 15 | 3 | 15 | 13 | |

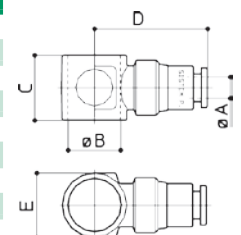


Serie 101.11.



Einfacher Ringanschluss

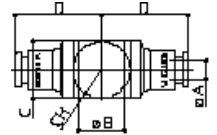
| Artikel-Nr. | A | B | C | D | E | F | G | CH | CH1 |
|--------------|----|----------|----|------|------|---|---|----|-----|
| 101.11.04.08 | 4 | 5,2-M5 | 9 | 19,0 | 9,0 | | | | |
| 101.11.04.10 | 4 | 10,3-1/8 | 14 | 22,5 | 14,0 | | | | |
| 101.11.05.08 | 5 | 5,2-M5 | 10 | 20,0 | 10,0 | | | | |
| 101.11.05.10 | 5 | 10,3-1/8 | 14 | 23,0 | 14,0 | | | | |
| 101.11.06.10 | 6 | 10,3-1/8 | 14 | 25,5 | 14,0 | | | | |
| 101.11.06.13 | 6 | 13,3-1/4 | 16 | 27,0 | 17,0 | | | | |
| 101.11.08.10 | 8 | 10,3-1/8 | 14 | 27,0 | 15,0 | | | | |
| 101.11.08.13 | 8 | 13,3-1/4 | 16 | 28,5 | 17,0 | | | | |
| 101.11.10.13 | 10 | 13,3-1/4 | 16 | 35,0 | 17,0 | | | | |



Steckverbinder, Metall vernickelt
**Serie
101.12.**

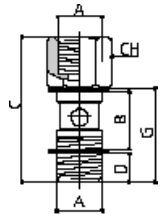

T-Ringanschluss

| Artikel-Nr. | A | B | C | D | E | F | G | CH | CH1 |
|--------------|----|----------|----|------|------|---|---|----|-----|
| 101.12.04.08 | 4 | 5,1-M5 | 9 | 19,0 | 9,0 | | | | |
| 101.12.04.10 | 4 | 10,2-1/8 | 14 | 23,5 | 15,0 | | | | |
| 101.12.06.10 | 6 | 10,2-1/8 | 14 | 24,0 | 15,0 | | | | |
| 101.12.06.13 | 6 | 13,2-1/4 | 16 | 26,5 | 17,5 | | | | |
| 101.12.08.10 | 8 | 10,2-1/8 | 14 | 25,5 | 15,0 | | | | |
| 101.12.08.13 | 8 | 13,2-1/4 | 16 | 29,0 | 17,5 | | | | |
| 101.12.10.13 | 10 | 13,2-1/4 | 16 | 29,0 | 17,5 | | | | |


**Serie
101.24.**

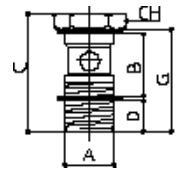
 Einfache Aufschraubhohlschraube
 zylindrisches Gewinde UNI-ISO 228/1

| Artikel-Nr. | A | B | C | D | E | F | G | CH | CH1 |
|--------------|-----|----|----|-----|---|---|------|----|-----|
| 101.24.01.10 | 1/8 | 14 | 35 | 6,0 | | | 23,0 | 14 | |
| 101.24.01.13 | 1/4 | 16 | 40 | 6,5 | | | 25,5 | 17 | |


**Serie
101.10.01**

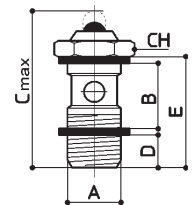
 Einfache Hohlschraube
 zylindrisches Gewinde UNI-ISO 228/1

| Artikel-Nr. | A | B | C | D | E | F | G | CH | CH1 |
|--------------|-----|----|------|-----|---|---|------|----|-----|
| 101.10.01.08 | M5 | 9 | 19,5 | 5,0 | | | 16,0 | 8 | |
| 101.10.01.10 | 1/8 | 14 | 27,0 | 6,0 | | | 23,0 | 14 | |
| 101.10.01.13 | 1/4 | 16 | 29,5 | 6,5 | | | 25,5 | 17 | |


**Serie
101.10...D**

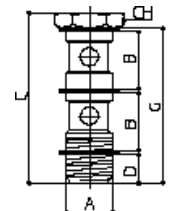
 Einfache Hohlschraube mit Druckanzeige
 zylindrisches Gewinde UNI-ISO 228/1

| Artikel-Nr. | A | B | C | D | E | F | G | CH | CH1 |
|----------------|-----|----|----|-----|---|---|------|----|-----|
| 101.10.01.10.D | 1/8 | 14 | 32 | 6,0 | | | 23,0 | 14 | |
| 101.10.01.13.D | 1/4 | 16 | 34 | 6,5 | | | 25,5 | 17 | |


**Serie
101.10.02**

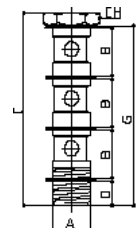
 Zweifache Hohlschraube
 zylindrisches Gewinde UNI-ISO 228/1

| Artikel-Nr. | A | B | C | D | E | F | G | CH | CH1 |
|--------------|-----|----|------|-----|---|---|----|----|-----|
| 101.10.02.08 | M5 | 9 | 28,5 | 4,0 | | | 25 | 8 | |
| 101.10.02.10 | 1/8 | 14 | 43,0 | 6,5 | | | 39 | 14 | |
| 101.10.02.13 | 1/4 | 16 | 46,0 | 5,5 | | | 42 | 17 | |


**Serie
101.10.03**

 Dreifache Hohlschraube
 zylindrisches Gewinde UNI-ISO 228/1

| Artikel-Nr. | A | B | C | D | E | F | G | CH | CH1 |
|--------------|-----|----|------|-----|---|---|------|----|-----|
| 101.10.03.10 | 1/8 | 14 | 58,5 | 6,5 | | | 54,5 | 14 | |
| 101.10.03.13 | 1/4 | 16 | 64,0 | 6,0 | | | 60,0 | 17 | |



Steckverbinder, Metall vernickelt

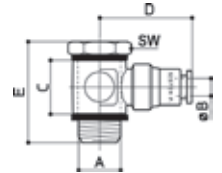
Serie

101.18.

Winkel-Schwenkanschluss
zylindrisches Gewinde UNI-ISO 228/1



| Artikel-Nr. | B | A | C | D | E | F | G | CH | CH1 |
|--------------|----|-----|----|------|------|---|---|----|-----|
| 101.18.04.08 | 4 | M5 | 9 | 19,0 | 18,5 | | | | |
| 101.18.04.10 | 4 | 1/8 | 14 | 25,0 | 27,0 | | | | |
| 101.18.05.08 | 5 | M5 | 10 | 20,0 | 18,5 | | | | |
| 101.18.05.10 | 5 | 1/8 | 14 | 23,0 | 27,0 | | | | |
| 101.18.06.10 | 6 | 1/8 | 14 | 27,5 | 27,0 | | | | |
| 101.18.06.13 | 6 | 1/4 | 16 | 26,5 | 29,5 | | | | |
| 101.18.08.10 | 8 | 1/8 | 14 | 28,5 | 27,0 | | | | |
| 101.18.08.13 | 8 | 1/4 | 16 | 31,5 | 29,5 | | | | |
| 101.18.10.13 | 10 | 1/4 | 16 | 32,0 | 29,5 | | | | |



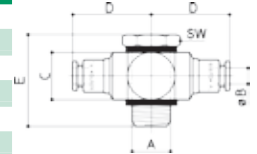
Serie

101.19.

T-Schwenkanschluss
zylindrisches Gewinde UNI-ISO 228/1



| Artikel-Nr. | B | A | C | D | E | F | G | CH | CH1 |
|--------------|----|-----|----|------|------|---|---|----|-----|
| 101.19.04.08 | 4 | M5 | 9 | 19,0 | 18,5 | | | | |
| 101.19.04.10 | 4 | 1/8 | 14 | 23,5 | 27,0 | | | | |
| 101.19.06.10 | 6 | 1/8 | 14 | 24,0 | 27,0 | | | | |
| 101.19.06.13 | 6 | 1/4 | 16 | 26,5 | 29,5 | | | | |
| 101.19.08.10 | 8 | 1/8 | 14 | 25,5 | 27,0 | | | | |
| 101.19.08.13 | 8 | 1/4 | 16 | 29,0 | 29,5 | | | | |
| 101.19.10.13 | 10 | 1/4 | 16 | 29,0 | 29,5 | | | | |



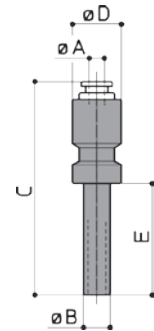
Serie

101.66.

Reduzierung, Kunststoff



| Artikel-Nr. | A | B | C | D | E | F | G | CH | CH1 |
|--------------|----|----|------|------|----|---|---|----|-----|
| 101.66.04.06 | 4 | 6 | 45,5 | 11,0 | 22 | | | | |
| 101.66.04.08 | 4 | 8 | 48,5 | 14,0 | 25 | | | | |
| 101.66.04.10 | 4 | 10 | 47,5 | 15,5 | 28 | | | | |
| 101.66.04.12 | 4 | 12 | 49,0 | 16,0 | 30 | | | | |
| 101.66.06.08 | 6 | 8 | 51,0 | 15,5 | 25 | | | | |
| 101.66.06.10 | 6 | 10 | 50,5 | 15,5 | 28 | | | | |
| 101.66.06.12 | 6 | 12 | 53,5 | 16,0 | 30 | | | | |
| 101.66.06.14 | 6 | 14 | 56,5 | 16,0 | 33 | | | | |
| 101.66.08.10 | 8 | 10 | 52,0 | 15,5 | 28 | | | | |
| 101.66.08.12 | 8 | 12 | 54,0 | 16,0 | 30 | | | | |
| 101.66.08.14 | 8 | 14 | 57,0 | 16,0 | 33 | | | | |
| 101.66.10.12 | 10 | 12 | 56,0 | 18,5 | 30 | | | | |
| 101.66.10.14 | 10 | 14 | 59,0 | 18,5 | 33 | | | | |
| 101.66.12.14 | 12 | 14 | 60,0 | 22,0 | 33 | | | | |



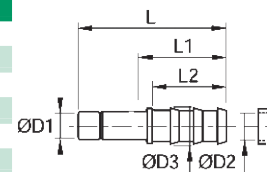
Serie

101.22.

Schlauchstecktülle



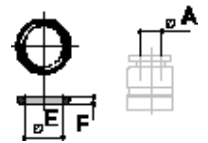
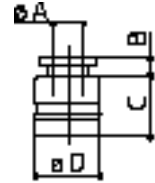
| Artikel-Nr. | D1 | D2 | D3 | L | L1 | L2 | G | CH | CH1 |
|--------------|----|-----|----|------|------|------|---|----|-----|
| 101.22.04.03 | 4 | 3,2 | 5 | 40,5 | 27,0 | 22,5 | | | |
| 101.22.04.05 | 4 | 5 | 7 | 40,5 | 27,0 | 22,5 | | | |
| 101.22.05.05 | 5 | 5 | 7 | 40,5 | 27,0 | 22,5 | | | |
| 101.22.06.05 | 6 | 5 | 7 | 43,0 | 27,0 | 22,5 | | | |
| 101.22.08.08 | 8 | 8 | 10 | 44,0 | 27,0 | 22,5 | | | |
| 101.22.10.08 | 10 | 8 | 10 | 47,5 | 25,5 | 22,5 | | | |
| 101.22.12.08 | 12 | 8 | 10 | 48,5 | 25,5 | 22,5 | | | |
| 101.22.12.10 | 12 | 10 | 10 | 48,5 | 25,5 | 22,5 | | | |
| 101.22.14.14 | 14 | 14 | 16 | 59,5 | 35,0 | 29,5 | | | |



Steckverbinder, Metall vernickelt
Serie 101.00.

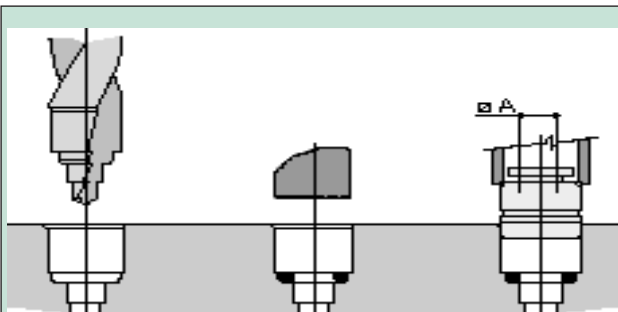
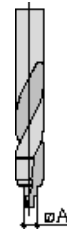

Einpress-Anschluss mit O-Ring

| Artikel-Nr. | A | B | C | D | E | F | G | CH | CH1 |
|--------------|----|-----|------|----|-------|------|---|----|-----|
| 101.00.04.00 | 4 | 2,0 | 8,5 | 8 | 3,69 | 1,78 | | | |
| 101.00.05.00 | 5 | 2,0 | 8,5 | 9 | 4,48 | 1,78 | | | |
| 101.00.06.00 | 6 | 2,5 | 10,5 | 11 | 6,07 | 1,78 | | | |
| 101.00.08.00 | 8 | 2,5 | 11,5 | 13 | 7,66 | 1,78 | | | |
| 101.00.10.00 | 10 | 4,0 | 12,0 | 16 | 9,92 | 2,62 | | | |
| 101.00.12.00 | 12 | 4,0 | 12,5 | 19 | 11,91 | 2,62 | | | |
| 101.00.14.00 | 14 | 4,0 | 15,0 | 23 | 13,95 | 2,62 | | | |


Serie 101.00.70


Stufenbohrer für Patronensitz, Typ PEB

| Artikel-Nr. | A | B | C | D | E | F | G | CH | CH1 |
|--------------|----|---|---|---|---|---|---|----|-----|
| 101.00.70.04 | 4 | | | | | | | | |
| 101.00.70.05 | 5 | | | | | | | | |
| 101.00.70.06 | 6 | | | | | | | | |
| 101.00.70.08 | 8 | | | | | | | | |
| 101.00.70.10 | 10 | | | | | | | | |
| 101.00.70.12 | 12 | | | | | | | | |
| 101.00.70.14 | 14 | | | | | | | | |


Stufenbohrung mit Bohrer 101.70
O-Ring einlegen
Einpressen der Patrone

Create insert Seat with 101.70

Fit O-Ring

Bushes Driving

Utiliser le foret 101.70 pour aleser le logement de la douille

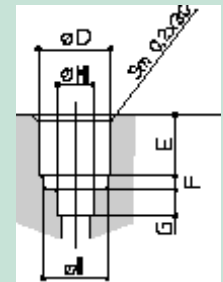
Assembler l' O-Ring

Enfoncer la douille

Forare con punta 101.70 per eseguire la sede bussola

Montare l' O-Ring

Inserire la bussola

D: Patronensitz-Insert Housing-Logement De La Douille
H: Schlauchführung-Guide Tube-Guida Du Tube-Guida Tubo
I: Sitz für O-Ring-O-Ring Housing- Logement Du O-Ring-Sede O-Ring


| A | D | E | F | G | H | I |
|----|----|------|---|---|-------|------|
| 4 | 8 | 8,5 | 2 | 3 | 4,15 | 7,0 |
| 5 | 9 | 8,5 | 2 | 3 | 5,15 | 7,9 |
| 6 | 11 | 10,5 | 2 | 3 | 6,15 | 8,9 |
| 8 | 13 | 11,5 | 2 | 3 | 8,15 | 10,9 |
| 10 | 16 | 12,0 | 3 | 4 | 10,15 | 14,3 |
| 12 | 19 | 12,5 | 3 | 5 | 12,15 | 16,3 |
| 14 | 23 | 15,0 | 3 | 5 | 14,15 | 18,3 |

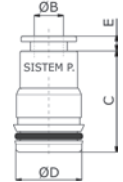
Steckverbinder, Metall vernickelt

Serie 101.00.



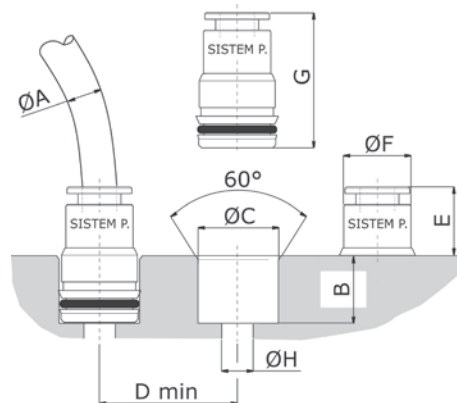
Einpress-Anschluss

| Artikel-Nr. | A | B | C | D | E | F | G | CH | CH1 |
|---------------|---|----|------|------|-----|---|---|----|-----|
| 101.00.04.95 | | 4 | 17,0 | 9,5 | 2,0 | | | | |
| 101.00.04.98 | | 4 | 17,0 | 9,8 | 2,0 | | | | |
| *101.00.06.04 | | 6 | 18,0 | 21,1 | 2,5 | | | | |
| 101.00.08.01 | | 8 | 19,5 | 14,8 | 2,5 | | | | |
| *101.00.10.04 | | 10 | 21,5 | 17,5 | 4,0 | | | | |
| *101.00.12.04 | | 12 | 22,0 | 20,0 | 4,0 | | | | |
| *101.00.14.04 | | 14 | 26,0 | 22,0 | 4,0 | | | | |



| Artikel-Nr. | A | B | C | D | E | F | G | H |
|---------------|----|------|------|------|------|------|------|------|
| 101.00.04.95 | 4 | 8,5 | 9,5 | 11,0 | 10,5 | 8,2 | 8,5 | 19,0 |
| 101.00.04.98 | 4 | 8,5 | 9,8 | 11,0 | 10,5 | 8,2 | 8,5 | 19,0 |
| *101.00.06.04 | 6 | 8,5 | 12,1 | 13,5 | 12,0 | 10,0 | 8,5 | 20,5 |
| 101.00.08.01 | 8 | 8,5 | 14,8 | 16,0 | 13,5 | 12,7 | 8,5 | 22,0 |
| *101.00.10.04 | 10 | 10,5 | 17,5 | 20,0 | 15,0 | 14,9 | 10,5 | 25,5 |
| *101.00.12.04 | 12 | 10,5 | 20,0 | 22,5 | 15,5 | 16,9 | 10,5 | 26,0 |
| *101.00.14.04 | 14 | 12,0 | 22,0 | 25,0 | 18,0 | 19,0 | 12,0 | 30,0 |

* auf Anfrage



Serie 101.00.

Rohrschneider und Ersatzmesser

| Artikel-Nr. | H | L | für Rohr |
|--------------|----|----|-------------|
| 101.00.80.00 | 25 | 80 | 4 mm-12 mm |
| 101.00.80.10 | | | 4 mm-10 mm |
| 101.00.80.20 | | | 10 mm-14 mm |

| Artikel-Nr. | Ersatzmesser für Rohrschneider |
|--------------|--------------------------------|
| 101.00.80.05 | 101.00.80.00 |
| 101.00.80.15 | 101.00.80.10 |
| 101.00.80.25 | 101.00.80.20 |



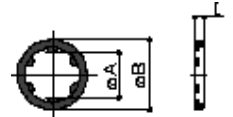
Steckverbinder, Metall vernickelt

Serie 101.37.



Dichtring, Kunststoff, unverlierbar

| Artikel-Nr. | A | B | C |
|--------------|---------|-----|-----|
| 101.37.08.00 | für M5 | 8,5 | 1,5 |
| 101.37.10.00 | für 1/8 | 14 | 1,5 |
| 101.37.13.00 | für 1/4 | 18 | 2,0 |
| 101.37.17.00 | für 3/8 | 22 | 2,0 |
| 101.37.21.00 | für 1/2 | 26 | 2,5 |
| 101.37.27.00 | für 3/4 | 33 | 2,5 |
| 101.37.34.00 | für 1 | 41 | 2,5 |

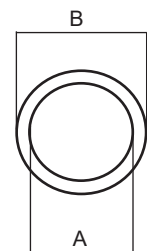


Serie 101.37.



Dichtring, Kunststoff

| Artikel-Nr. | A | B | C |
|-----------------|---------|-----|-----|
| 101.37.08.00.01 | für M5 | 8,5 | 1,5 |
| 101.37.10.00.01 | für 1/8 | 14 | 1,5 |
| 101.37.13.00.01 | für 1/4 | 18 | 2,0 |
| 101.37.17.00.01 | für 3/8 | 22 | 2,0 |
| 101.37.21.00.01 | für 1/2 | 26 | 2,5 |
| 101.37.27.00.01 | für 3/4 | 33 | 2,5 |
| 101.37.34.00.01 | für 1 | 41 | 2,5 |

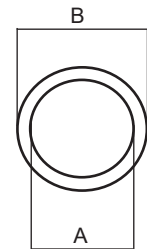


Serie 201.38.



Dichtring, Kupfer

| Artikel-Nr. | A | B | C |
|--------------|----|-------|-----|
| 201.38.06.00 | 6 | 9 | 1,0 |
| 201.38.08.00 | 8 | 11 | 1,0 |
| 201.38.10.00 | 10 | 1/8 | 14 |
| 201.38.12.00 | 12 | 16 | 1,5 |
| 201.38.13.00 | 13 | 1/4 | 18 |
| 201.38.14.00 | 14 | 18 | 1,5 |
| 201.38.16.00 | 16 | 20 | 1,5 |
| 201.38.17.00 | 17 | 3/8 | 21 |
| 201.38.18.00 | 18 | 22 | 1,5 |
| 201.38.20.00 | 20 | 24 | 1,5 |
| 201.38.21.00 | 21 | 1/2 | 26 |
| 201.38.22.00 | 22 | 27 | 1,5 |
| 201.38.24.00 | 24 | 29 | 2,0 |
| 201.38.26.00 | 26 | 31 | 2,0 |
| 201.38.27.00 | 27 | 3/4 | 32 |
| 201.38.30.00 | 30 | 36 | 2,0 |
| 201.38.33.00 | 33 | 1 | 39 |
| 201.38.36.00 | 36 | 42 | 2,0 |
| 201.38.39.00 | 39 | 44 | 2,0 |
| 201.38.42.00 | 42 | 1 1/4 | 48 |
| 201.38.45.00 | 45 | 55 | 2,0 |
| 201.38.48.00 | 48 | 1 1/2 | 58 |
| 201.38.52.00 | 52 | 58 | 2,0 |
| 201.38.60.00 | 60 | 2 | 66 |



* Andere Durchmesser auf Anfrage lieferbar

Serie 201.39



Dichtring, Aluminium

| Artikel-Nr. | A | B | C |
|--------------|---------|----|-----|
| 201.39.10.00 | für 1/8 | 14 | 1,0 |
| 201.39.13.00 | für 1/4 | 18 | 1,5 |
| 201.39.17.00 | für 3/8 | 22 | 1,5 |
| 201.39.21.00 | für 1/2 | 26 | 1,5 |

